

# **DENTAL ANATOMY**

**MANDIBULAR CANINE**

**SUBMITTED BY : ASSIST LECTURER SAMAH KHALEEL RADHI**

## MANDIBULAR CANINE

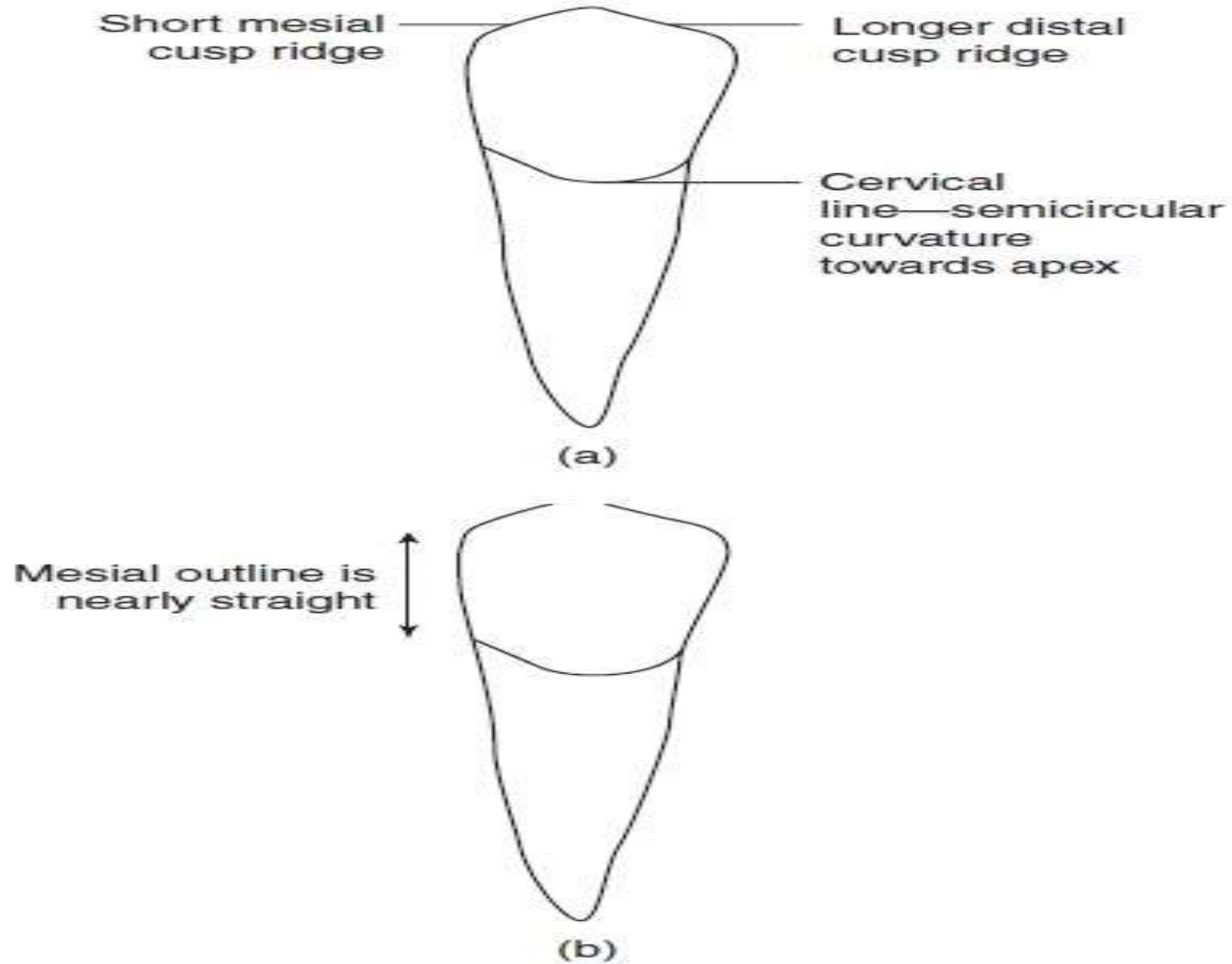
- ❖ The mandibular canines are similar to maxillary canines but narrower mesiodistally and labiolingually.
- ❖ The crown height of the mandibular canine is slightly longer than that of the maxillary canine



# LABIAL ASPECT

The essential differences between mandibular and maxillary canines viewed from the labial aspect are as follows:

<b>MAXILLARY CANINE</b>	<b>MANDIBULAR CANINE</b>
<b>1.Crown wider mesiodistally</b>	<b>1.Crown narrower mesiodistally</b>
<b>2.Cusp angle is sharper, more acute</b>	<b>2.Cusp angle more blunt</b>
<b>3.Mesial cusp ridge is shorter than distal</b>	<b>3.Mesial cusp ridge much shorter than distal</b>
<b>4.Mesial, distal proximal contacts more cervical</b>	<b>4.Mesial, distal proximal contacts</b>
<b>5.More pronounced labial ridge</b>	<b>5.Less pronounced labial ridge</b>

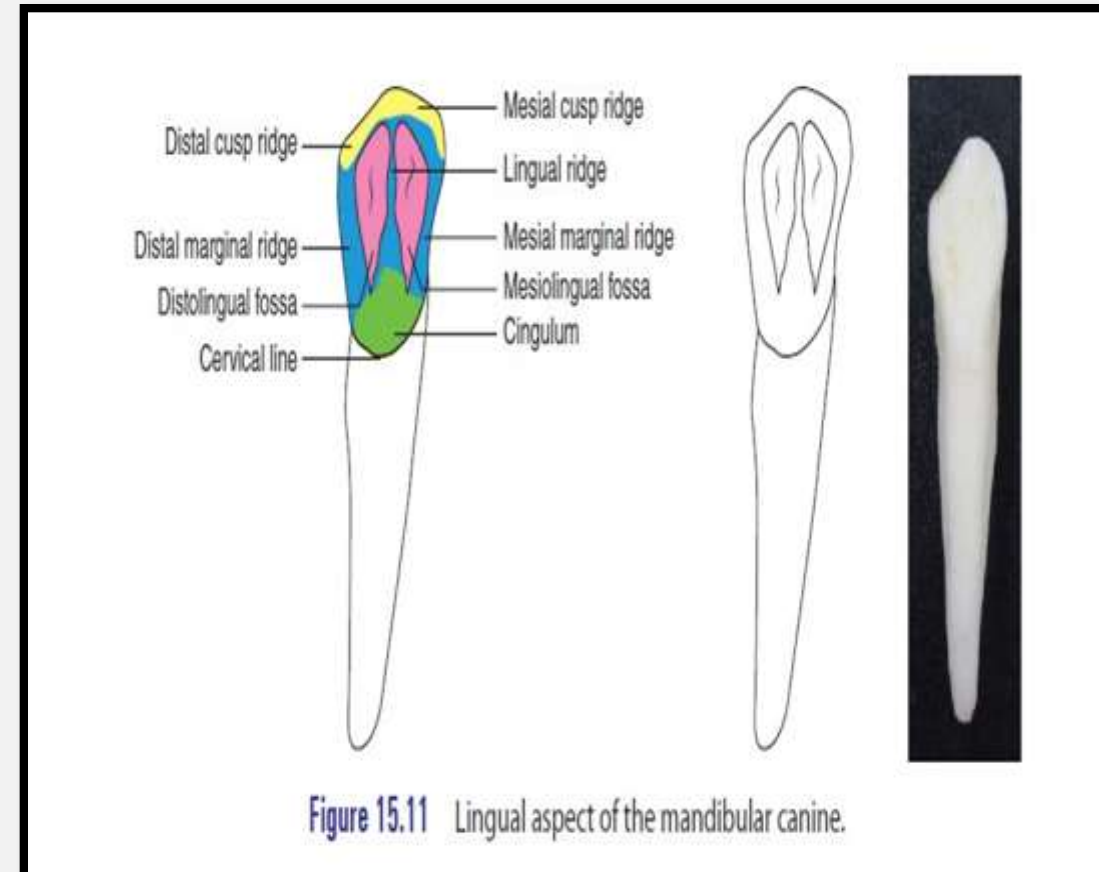


**Figure 15.10** Labial aspect of the mandibular canine.

# Lingual Aspect

**In comparing the lingual aspect of the mandibular canine with that of the maxillary canine, the following differences are noted:**

MAXILLARY CANINE	MANDIBULAR CANINE
1. More prominent anatomy on lingual:	1. Smoother lingual surface:
2. Lingual marginal ridges pronounced	2. Lingual marginal ridges less pronounced
3. Prominent lingual ridge and fossae	3. Less prominent lingual ridge and fossae
4. Cingulum centered	4. Cingulum centered or to distal

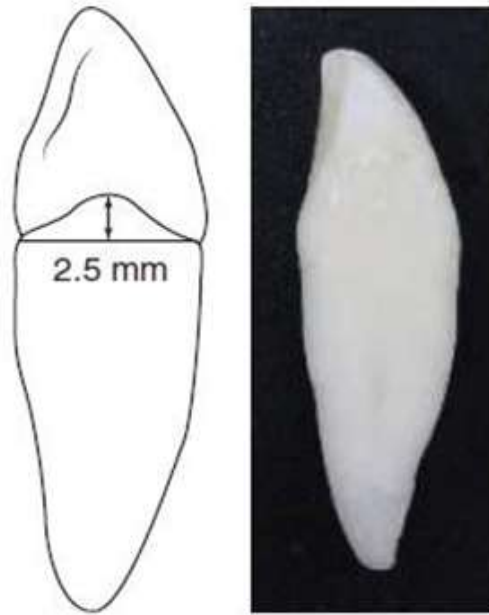


## Mesial Aspect:

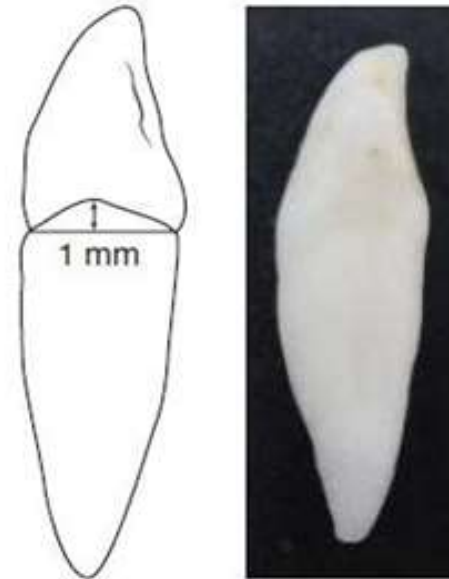
- The mandibular canine has less curvature labially on the crown .
- the curvature at the cervical portion is less than 0.5 mm.
- The lingual outline of the crown is curved in the same manner as that of the maxillary canine
- The cingulum is not as pronounced, and the incisal portion of the crown is thinner labiolingually , which allows the cusp to appear more pointed and the cusp ridge to appear more slender

## Distal Aspect

Little difference from the distal aspect can be seen between mandibular and maxillary canines except for those features mentioned under the mesial aspect that are common to both.



**Figure 15.12** Mesial aspect of the mandibular canine.

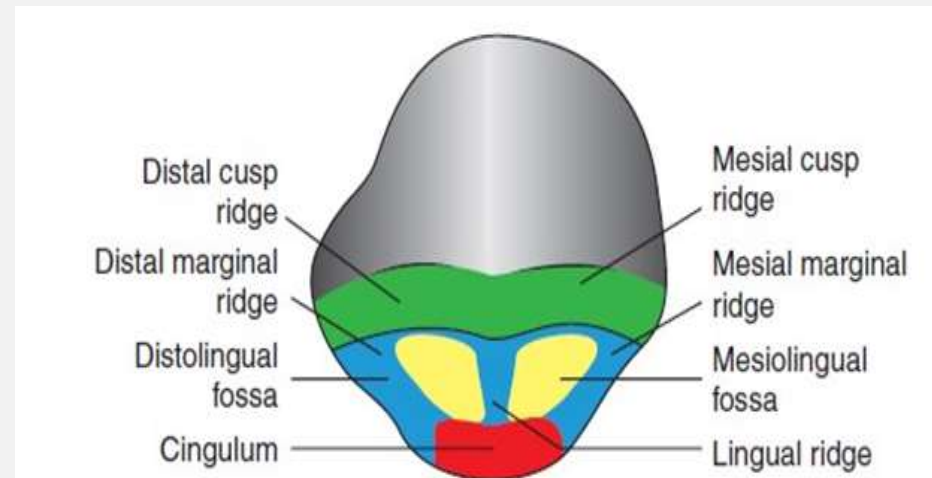


**Figure 15.13** Distal aspect of the mandibular canine.

## Incisal Aspect

The outlines of the crowns of mandibular and maxillary canines from the incisal aspect are often similar. The main differences to be noted are as follows:

1. The mesiodistal dimension of the mandibular canine is less than the labiolingual dimension. A similarity is evident in this, but the outlines of the mesial surface are less curved.
2. The cusp tip and mesial cusp ridge are more likely to be inclined in a lingual direction in the mandibular canine



**Figure 15.14** Incisal aspect of the mandibular canine.

